



# NABERS

## NABERS WASTE FOR DATA CENTRES

An essential tool for data centre  
sustainability strategies



### WHAT IS NABERS?

NABERS (National Australian Built Environment Rating System) is a government initiative providing certified sustainability ratings and tools to support the efficiency of buildings across Australia.

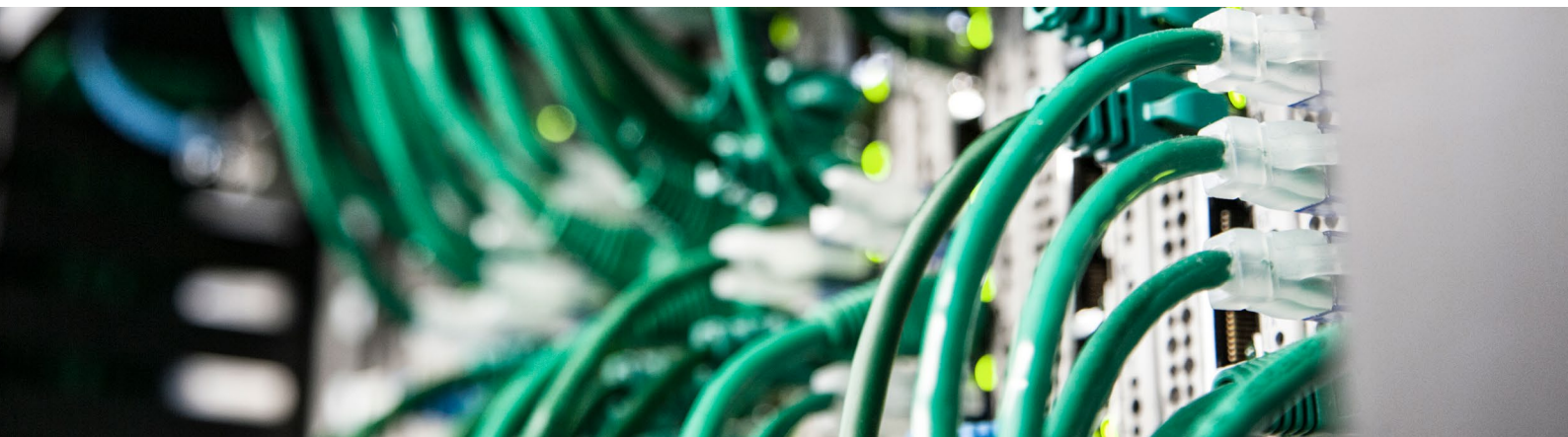
NABERS tools are simple, reliable and trusted, helping building operators accurately measure the environmental performance of their facility and identify areas for improvement.

For 25 years, the NABERS program has driven significant financial growth and returns across building sectors, proving that environmentally friendly buildings are not only better for people and the planet; they're also better for the bottom lines of Australian businesses.

In 2020-21, nearly 21 million tonnes of waste were generated by commercial and industrial buildings. As such, many companies and investors are now prioritising waste and sustainability strategies. However, waste from data centres has traditionally been hard to measure, and therefore difficult to manage, report on or improve upon.

### ABOUT NABERS WASTE FOR DATA CENTRES

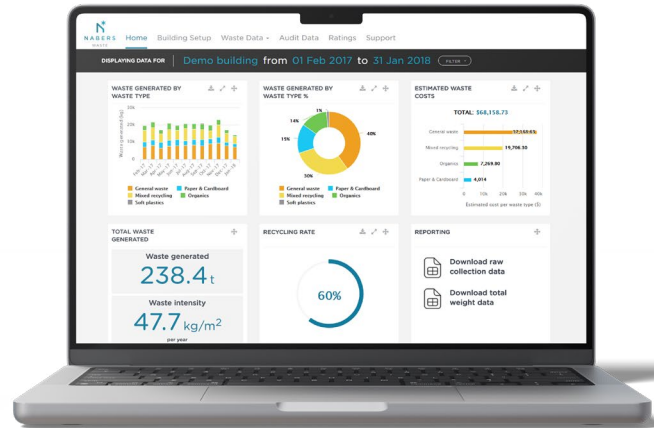
The NABERS Waste tool helps measure how well a building manages waste generation, recycling and resource recovery, and supply chain management. It is designed to help track and reduce waste, demonstrating a commitment to sustainability and creating a competitive advantage to future-proof investment. There are two tiers of NABERS Waste tool services available to data centres; the [NABERS Waste Platform](#) and a [NABERS Waste Verification Report](#) and NABERS rating remain confidential unless you choose to share them.



## NABERS WASTE PLATFORM

The NABERS Waste Platform is an online tool designed to help you understand and improve your data centre's waste practices. The NABERS Waste Platform can be used to monitor:

- ✓ RECYCLING RATE
- ✓ MATERIAL STREAM COMPOSITION
- ✓ WASTE INTENSITIES
- ✓ FREQUENCY OF WASTE COLLECTIONS
- ✓ VOLUMES OR WEIGHTS COLLECTED
- ✓ WASTE COLLECTION COSTS



The dynamic dashboard of the NABERS Waste Platform makes it easier to share visual, actionable insights with staff, tenants and other stakeholders

## NABERS WASTE VERIFICATION REPORT

The NABERS Waste Verification Report is designed for buildings that want to report and communicate their waste performance using a respected industry standard. The report is generated using NABERS Waste Platform data, alongside in-person verification by a NABERS Accredited Assessor.

A NABERS Waste Verification Report includes a NABERS Verified Waste Score and NABERS Verified Recycling Rate, as well as access to the NABERS Waste Platform for one year.

## HOW NABERS WASTE BENEFITS DATA CENTRES



MEASURE PERFORMANCE AND TRACK IMPROVEMENTS



REDUCE LANDFILL WASTE AND ENVIRONMENTAL IMPACT



DEMONSTRATE A COMMITMENT TO SUSTAINABILITY



ATTRACT AND RETAIN PREMIUM TENANTS



GAIN THE COMPETITIVE EDGE FOR INVESTMENT



TRUSTED AND RECOGNISED THIRD-PARTY VERIFICATION

---

## HOW DO I ACCESS THE NABERS WASTE TOOL?

If you have bought a NABERS Waste Verification Report for your building, access to the NABERS Waste Platform is included for one year. If you have not yet bought a NABERS Waste Verification Report, you can still use the NABERS Waste Platform for a fee.

Find out more about [NABERS Waste services and pricing](#), or [contact NABERS](#) to get started.

---

## OUR PROMISE



### CONFIDENTIALITY

Your energy data and site details are only shared with your Assessor and NABERS, and are stored in compliance with NSW Government data management policies.



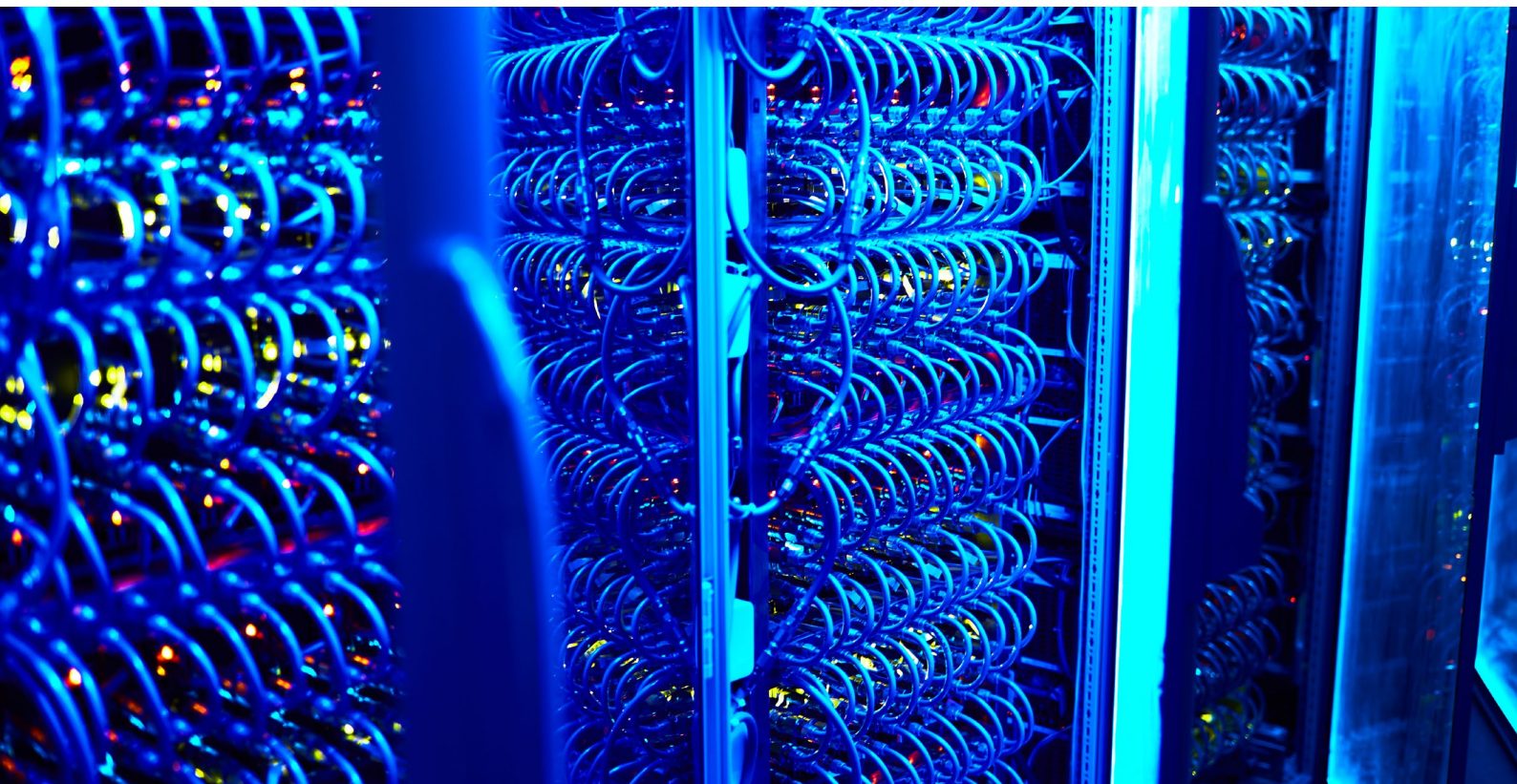
### IMPROVE ACCOUNTABILITY

By specifying NABERS ratings and improvements in your contracts and performance indicators, you can increase accountability and delivery from your service contractors and technical services.



### TRANSPARENCY

We can arrange a meeting with one of our qualified Assessors or a member of the NABERS team and your chief engineer or facilities management team to explain exactly how the program works and why it is the most robust system available.



## FIND OUT MORE

Visit our website

<https://www.nabers.gov.au/ratings/our-ratings/nabers-waste>

Contact the NABERS team

[nabers@environment.nsw.gov.au](mailto:nabers@environment.nsw.gov.au)

(02) 9995 5000

NABERS is a national initiative managed by the NSW Government on behalf of the Federal, State and Territory governments of Australia.