



NABERS

ENERGY PERFORMANCE INDICATOR

A simple energy rating tool to help more building sectors measure and improve their energy efficiency.

WHAT IS NABERS?

NABERS (National Australian Built Environment Rating System) is a government initiative providing certified sustainability ratings to support the efficiency of buildings across Australia. NABERS ratings are reliable and trusted, helping building owners and managers accurately measure, understand and communicate the environmental performance of their facility.

For 25 years, the NABERS rating system has driven significant financial growth and returns across building sectors, proving that environmentally friendly buildings are not only better for people and the planet; they're also better for the bottom lines of Australian businesses.

WHAT IS THE ENERGY PERFORMANCE INDICATOR?

The NABERS Energy Performance Indicator is a simplified energy rating tool for smaller sectors that do not currently have a standalone NABERS Energy rating tool. It provides a verified measure of energy and emissions intensity, helping buildings track performance, reduce emissions and cut costs over time.





WHO IS ELIGIBLE?

The Energy Performance Indicator helps building owners and tenants across Australia start their energy efficiency journeys. The Energy Performance Indicator is for building sectors that do not currently have a standalone NABERS Energy rating tool.

Buildings eligible for the NABERS Energy Performance Indicator include, but are not limited to (when they do not meet the eligibility requirements for existing NABERS Energy rating tools):

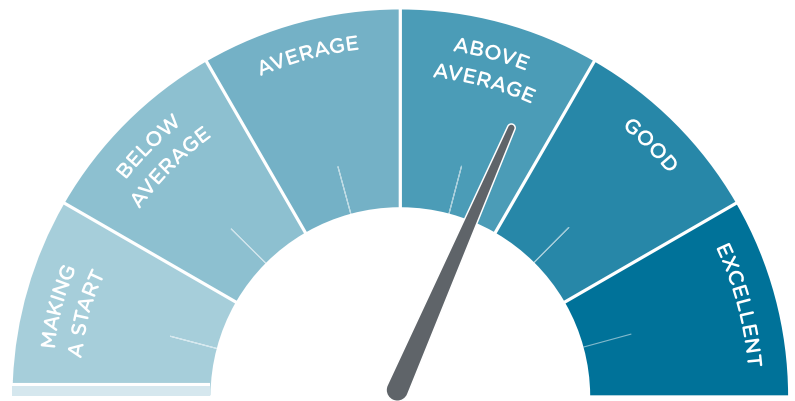
- ✔ Retail, food & beverage services.
- ✔ Entertainment, recreation & sports facilities.
- ✔ Public buildings & transport buildings.
- ✔ Manufacturing & storage facilities.
- ✔ Childcare centres, accommodation services and more.

WHAT ARE THE BENEFITS?

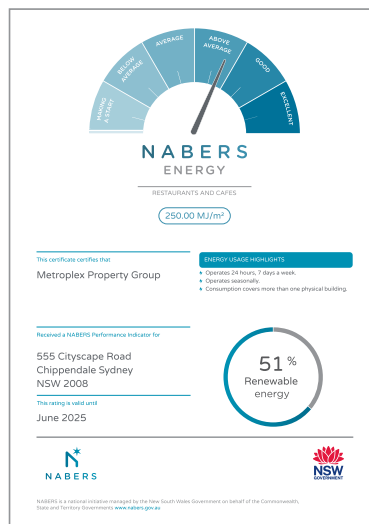
-  TRACK BUILDING PERFORMANCE & SUSTAINABILITY
-  IDENTIFY POTENTIAL COST SAVINGS
-  REDUCE GREENHOUSE GAS EMISSIONS OVER TIME
-  COMPARE WITH OTHERS IN THE SECTOR (WHERE DATA IS AVAILABLE)
-  PROMOTE ENVIRONMENTAL CREDENTIALS WITH NABERS CERTIFICATION

HOW DOES IT WORK?

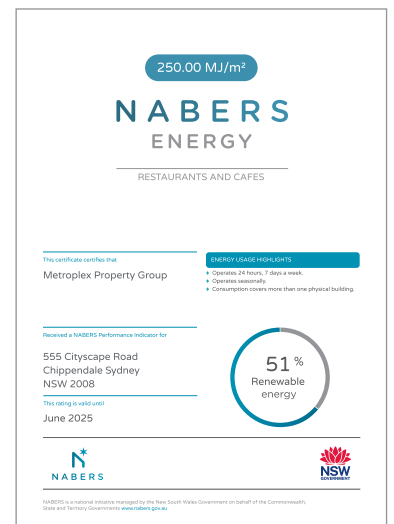
The NABERS Energy Performance Indicator provides a verified measure of energy and emissions intensity using energy usage and floor area. Your rating can be used to identify cost savings by tracking energy intensity and emissions over time, as well as to promote environmental credentials.



Where sufficient sector data is available, an Energy Performance Indicator rating can also be used for comparison of a building's energy performance against sector averages. This will be illustrated on the rating certificate using a dial instead of a star rating.



Certificate with sector comparison dial



Certificate without sector comparison dial

HOW DO I GET AN ENERGY PERFORMANCE INDICATOR RATING?

The NABERS Energy Performance Indicator rating is available for eligible buildings across Australia.

For more information and eligibility criteria, please refer to the [NABERS Energy Performance Indicator rules](#) or [visit the NABERS website](#).

OUR PROMISE



CONFIDENTIALITY

Your energy data and site details are only shared with your Assessor and NABERS, and are stored in compliance with NSW Government data management policies.



IMPROVE ACCOUNTABILITY

By specifying NABERS ratings and improvements in your contracts and performance indicators, you can increase accountability and delivery from your service contractors and technical services.



TRANSPARENCY

We can arrange a meeting with one of our qualified Assessors or a member of the NABERS team and your chief engineer or facilities management team to explain exactly how the program works and why it is the most robust system available.



GET YOUR RATING

Visit our website

<https://www.nabers.gov.au/ratings/our-ratings/nabers-energy-performance-indicator>

Contact the NABERS team

nabers@environment.nsw.gov.au
(02) 9995 5000

NABERS is a national initiative managed by the NSW Government on behalf of the Federal, State and Territory governments of Australia.