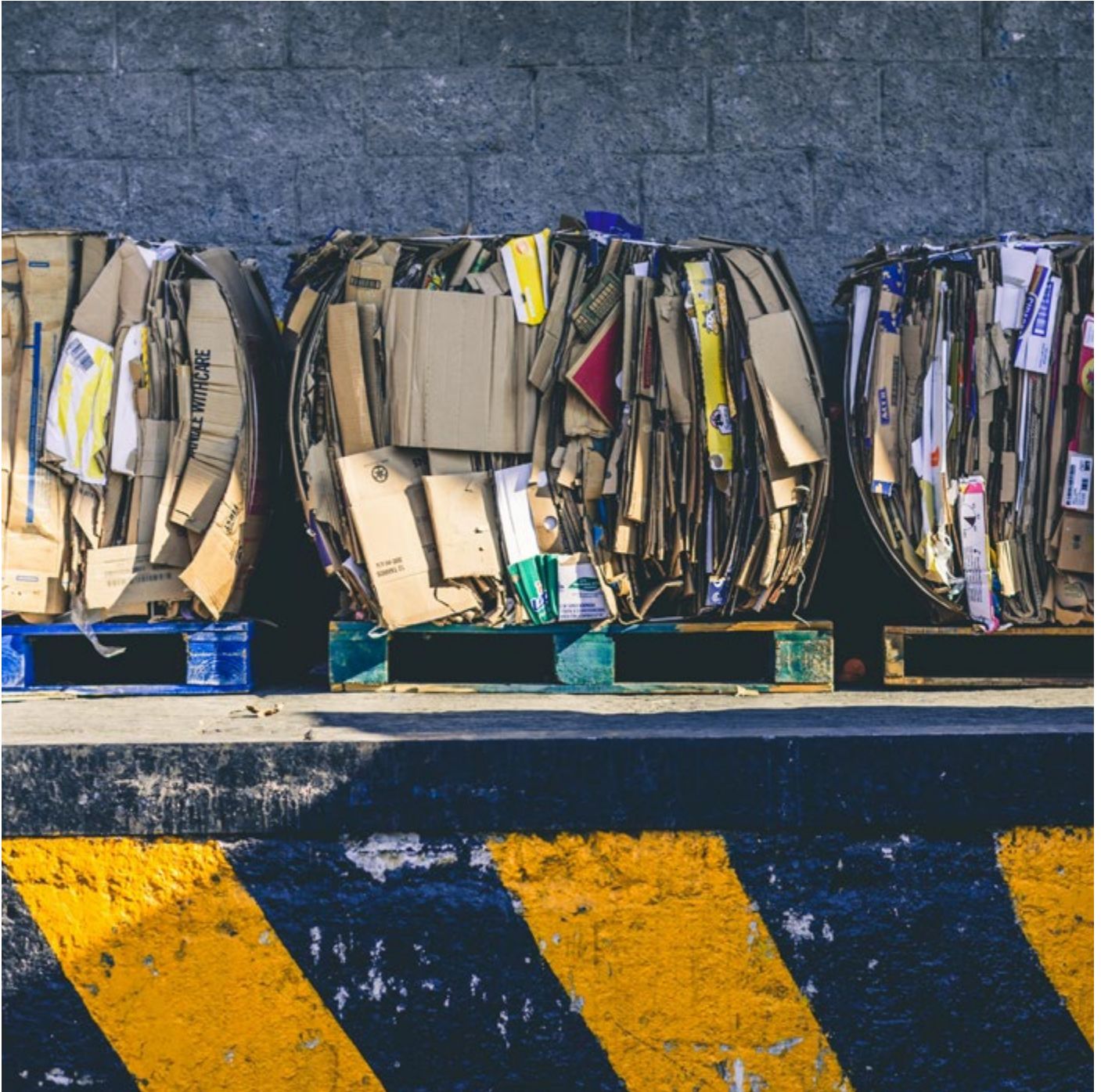


NABERS WASTE



**NABERS Waste helps you reduce
your building's waste to landfill**



WHY NABERS?

At NABERS, we know that environmentally friendly buildings are better for the bottom line, better for our staff, customers and communities and better for the planet.

NABERS (which stands for the National Australian Built Environment Rating System) provides simple, reliable and comparable sustainability measurement you can trust across building sectors like offices, apartments, hotels, shopping centres, data centres and more.

Over the last 20 years we have proven that “what gets measured gets managed”. Our rating system has

driven financial growth and solid returns in portfolios across building sectors by clearly demonstrating their operational performance. This third-party validation improves confidence and transparency as you can share your NABERS rating with staff and tenants. A NABERS rating helps you to accurately measure, understand and communicate the environmental performance of your building. It can assist you in identifying areas for future improvements and help drive progress towards a circular economy.

ABOUT NABERS WASTE

The NABERS Waste tool measures how well a building manages waste generation, recycling and resource recovery, and supply chain management.

The **NABERS Waste Platform** measures how well the people in buildings separate waste into streams that can be composted and recycled. The platform tracks your building’s waste data month to month and converts it into useful management insights.

A **NABERS Waste rating** communicates your building’s recycling and resource recovery performance with a star rating. The less you send to landfill, the higher your rating. You can use your NABERS Waste rating to compare your building with other buildings and improve your waste performance year on year. A rated building can confidently report its verified waste and recycling performance.

RATING TYPES

NABERS offers two benchmark options that can receive a star rating:

- Office Base building** — Measures only waste contracted by the building owner. This rating provides insights into the management of the building, irrespective of which tenants are in the building.
- Office Whole building** — Measures any waste that leaves from the building, where it can be reliably measured. This rating suits a building with highly engaged tenants who are working with building management.

Not an office building? If you manage another type of commercial building with one or more waste and cleaning contracts, you can still use the NABERS Waste platform to monitor your waste performance. You will not receive

a star rating, but you will receive a waste intensity metric and be able to access data assurance services.

NABERS STAR RATING GUIDE

★ ★ ★ ★ ★ ★ ★	MAKING A START
★ ★ ★ ★ ★ ★ ★	OPPORTUNITIES FOR UPGRADES
★ ★ ★ ★ ★ ★ ★	MARKET STANDARD
★ ★ ★ ★ ★ ★ ★	HIGH PERFORMANCE
★ ★ ★ ★ ★ ★ ★	SUPERIOR PERFORMANCE
★ ★ ★ ★ ★ ★ ★	MARKET LEADER

HOW YOU CAN BENEFIT



REDUCE WASTE TO LANDFILL



DEVELOP YOUR CIRCULAR ECONOMY POLICY



IMPROVE YOUR RECYCLING & RESOURCE RECOVERY



FIND OUT WHERE YOUR WASTE IS GOING



PROVIDE A BASELINE FOR IMPROVEMENT



VERIFY & VALIDATE INTERNAL TRACKING



BECOME A LEADER



REDUCE ENVIRONMENTAL IMPACT

OTHER NABERS TOOLS AVAILABLE ARE:

- NABERS Energy
- NABERS Water
- NABERS Indoor Environment

Visit www.nabers.gov.au/our-ratings to find out if the ratings are available in your sector.

HOW WE CALCULATE YOUR RECYCLING RATE

RECYCLING RATE =

$$\frac{\text{TOTAL RECYCLING WEIGHT}}{\text{TOTAL WASTE WEIGHT}}$$

YOUR SUSTAINABILITY STRATEGY

MEASURE PERFORMANCE

A NABERS Waste rating helps you put responsible waste management at the centre of your organisation's sustainability strategy and gives you the essential information you need to develop, evaluate and report on your circular economy policy. You'll also gain a head start to take advantage of potential government procurement policy.

IMPROVE ACCOUNTABILITY

A NABERS Waste rating helps incentivise your waste contractor to weigh your waste correctly and take your recycling and organics to the right place, empowering you to know exactly where your waste is going. NABERS Waste ratings align with the Better Buildings Partnership Operational Waste guidelines and the Good Environmental Choice (GECA) Waste Collections Services Standard.

VALIDATE AND COMMUNICATE

NABERS provides cost-effective, high-trust and independent validation of your sustainability data so you can be confident in reporting publicly and communicating simply.

TRACK IMPROVEMENTS

Gain exclusive access to Australia's most advanced waste monitoring system with over 50 waste streams to track your waste performance in real time. We provide you with a baseline for improvement and reward you with a higher

JOIN THE LEADERS

Many leading property companies in Australia are setting an industry example by committing to a 'closed loop' approach to resource use and minimising waste to landfill. The GPT Group was the first company to use the NABERS Waste platform and rating system and has committed to rating its whole office portfolio.

"In our buildings, tenants can be confident that they know what's happening to the materials that they place in the bin. NABERS provides a level playing field for assessing results and meaningfully comparing different buildings."

– **Steve Ford,**
Head of Sustainability and Energy, The GPT Group

86% of people believe that Australia should reduce the amount of waste we produce, and 98% believe waste is an issue for Australia.



STEPS TO A RATING



1. GET STARTED

Register your building on the NABERS Waste platform.

Upload waste data.

Engage a NABERS accredited assessor to arrange audit .

Obtain 2-3 assessor quotes to understand scope of work (site hours and consulting hours).

2. SEEK INTERNAL BUY-IN

Seek internal approval from senior management.

Consider adding NABERS waste data requirements to waste contracts.

Work with your contractors, cleaners and waste providers to review your onsite practices and prepare your data.

3. ACHIEVE NABERS CERTIFICATION

Upload up to 12 months of operational waste data and key inputs required to the Waste Manager platform. Your assessor will advise you on what you need to provide.

Organise access to your bin rooms for your assessor to conduct site visits to validate your rating.

Authorise your rating and communicate your progress.

4. IMPROVE YOUR RATING

Your NABERS rating lasts for 12 months.

Get annual ratings so that you can track improved performance.

Collect the whole set! Check if NABERS Energy, Water and Indoor Environment are offered for your building and sign up.

HOW CAN I IMPROVE MY NABERS WASTE RATING?

You can't improve what you can't measure, and it's normal to get a low rating the first time. These actions can help you towards improving your next rating:

- Review your waste management practices
- Increase recycling streams (organics, e-waste etc.)
- Improve the quality of data by weighing waste on site
- Renew your rating to monitor improvements



GET YOUR RATING

Visit our website

www.nabers.gov.au/ratings/our-ratings/nabers-waste

Contact the NABERS team

nabers@environment.nsw.gov.au
(02) 9995 5000